

[AMS 2453/LM\\_XB403](#)

DAILY ESTIMATED CUTOUT VALUES

	Choice 600-900#	Select 600-900#	Choice/Select Spread
Current Cutout Values:	246.98	216.94	30.04
Change from prior day:	0.45	1.08	
Primal Rib	418.77	304.34	
Primal Chuck	201.65	190.92	
Primal Round	218.40	215.40	
Primal Loin	308.45	248.45	
Primal Brisket	191.56	190.71	
Primal Short Plate	156.55	156.55	
Primal Flank	136.97	126.63	

Load Count:	
Total	104
Choice	62
Select	15
Trimming	7
Grinds	19

Fresh 50% Trimmings 7 Loads @ 71.41

[AMS 2829/NW\\_LS441](#)

USDA BY-PRODUCT DROP VALUE (STEER) - DAILY

14.57 Change: 0.05

[AMS 2466/LM\\_CT100](#)

5 AREA WEEKLY ACCUMULATED WEIGHTED AVG CATTLE PRICE

As of 10:00 am	Head Count	Avg Weight	Avg Price
Live Steer	22,626	1,500	146.77
Live Heifer	10,067	1,327	146.78
Dressed Steer	4,607	947	231.61
Dressed Heifer	2,195	849	231.65

[AMS 3208/SJ\\_LS710](#)

DAILY CATTLE SLAUGHTER

	Today	Saturday
Today	112,000	37,000
Week Ago	118,000	36,000
Year Ago (act)	107,000	58,000
Week to Date	623,000	660,000
Same Period Last Week	628,000	664,000
Same Period Last Year	584,000	643,000
Previous Day	Steer and Heifer 98,000 Cow and Bull 29,000	

[AMS 3209/SJ\\_LS712](#)

	10/15/2022 (Estimate)	Last Week (Estimate)	Last Year (Actual)
BEEF PRODUCTION			
Slaughter	660,000	664,000	643,000
Live Weights	1369	1368	1379
Dressed Weights	831	830	834
Beef Production (millions of pounds)	547.1	550.2	535.5

[AMS 2825/NW\\_LS410](#)

USDA BEEF CARCASS PRICE EQUIVALENT INDEX VALUE

	Choice 600-900#	Select 600-900#	Dressing percent:	
			Steer	Heifer
Change	0.89	1.21	63.24	63.25

[AMS 2455/LM\\_XB405](#)

USDA NATIONAL CUTTER COW CARCASS CUTOUT

205.22 2.80 90% lean: 258.30

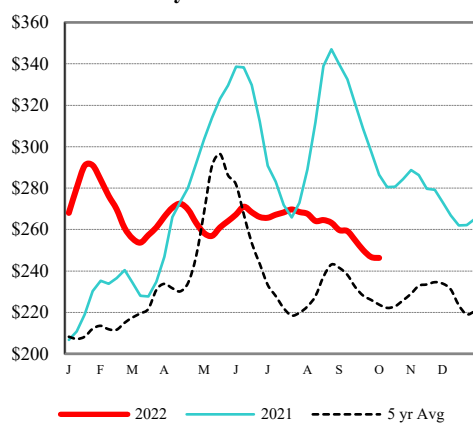
[CME LIVE CATTLE](#)

	High	Low	Change	Settle
OCT	147.18	145.95	0.50	146.95
DEC	148.40	146.90	(0.15)	147.78
FEB	152.05	150.75	(0.60)	151.10

[CME FEEDER CATTLE](#)

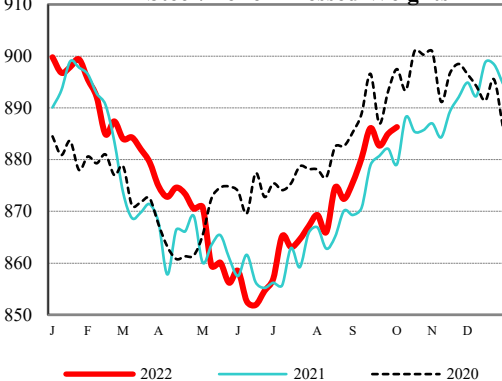
	High	Low	Change	Settle
OCT	175.15	173.13	(-0.95)	173.80
NOV	176.63	174.33	(-1.33)	174.78
JAN	176.80	174.70	(-1.20)	175.10

Weekly Choice Cutout



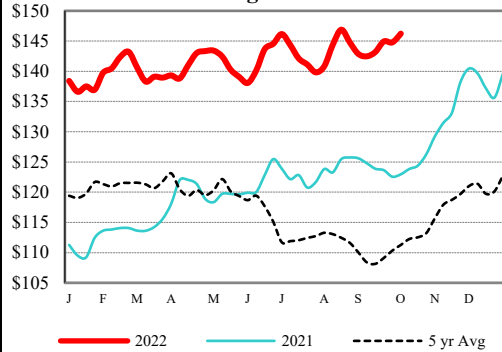
— 2022 — 2021 - - - - 5 yr Avg

LMR Steer/Heifer Dressed Weights



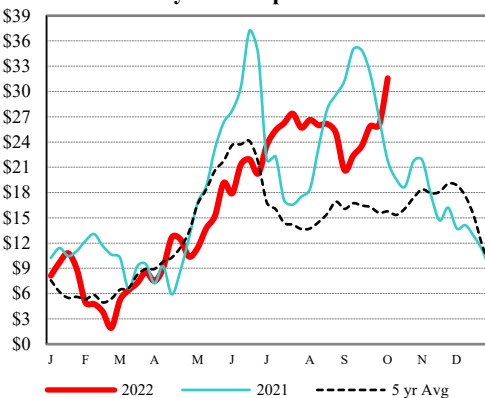
— 2022 — 2021 - - - - 2020

5 Area Weekly Wtd Avg Steer Price



— 2022 — 2021 - - - - 5 yr Avg

Weekly Ch/Se Spread



— 2022 — 2021 - - - - 5 yr Avg

USDA Livestock, Poultry & Grain Market News

Des Moines, Iowa | PH 515-284-4460

Email: [Desm.LPGMN@usda.gov](mailto:Desm.LPGMN@usda.gov)

<https://mymarketnews.ams.usda.gov/viewReport/2870>

[USDA AMS Livestock, Poultry & Grain Market News](#)